



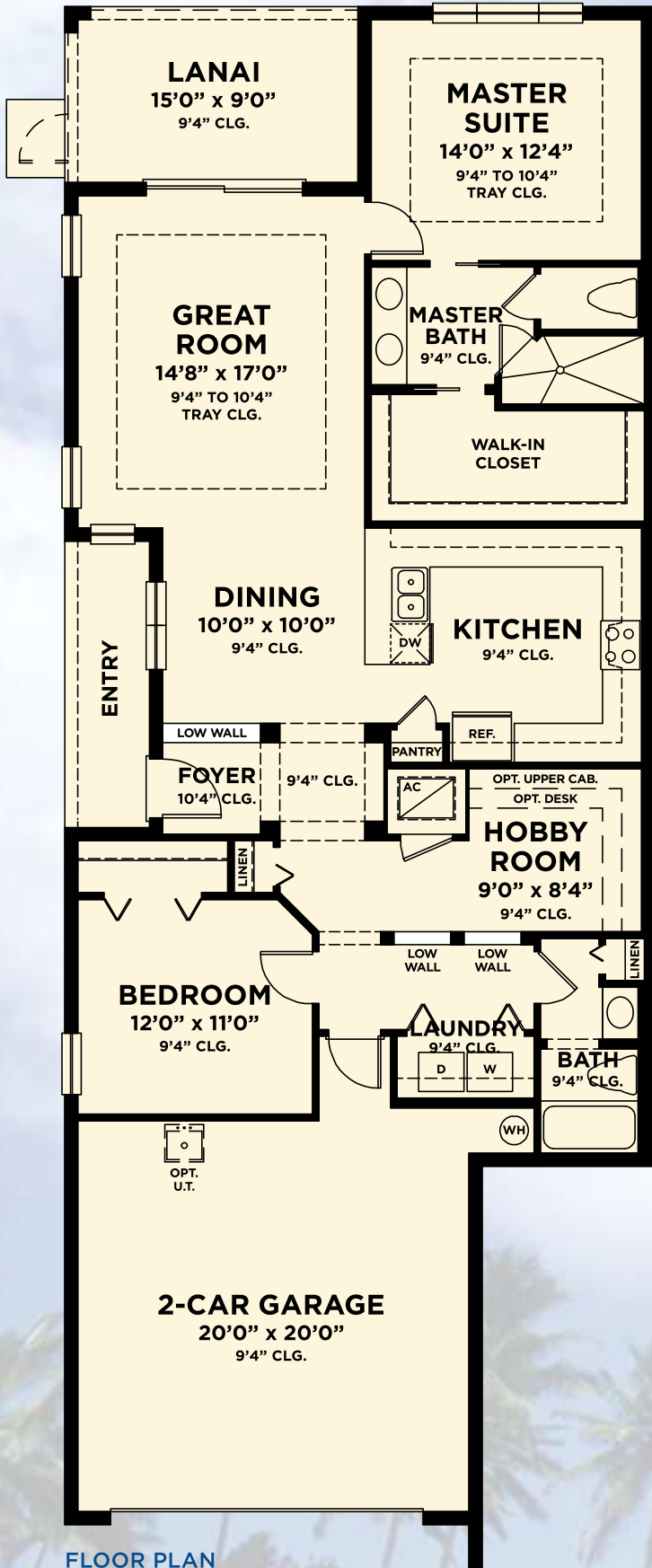
# RENAISSANCE

---

## VERONA



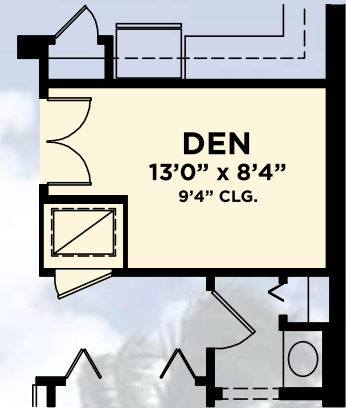
paired villa home designs



# Palm

- 2 Bedrooms
- 2 Baths
- Great Room
- Hobby Room
- Covered Lanai
- 2-Car Garage

Total - A/C Sq. Ft.	1,503
2-Car Garage	461
Covered Entry	64
Covered Lanai	135
<b>Total Sq. Ft.</b>	<b>2,163</b>

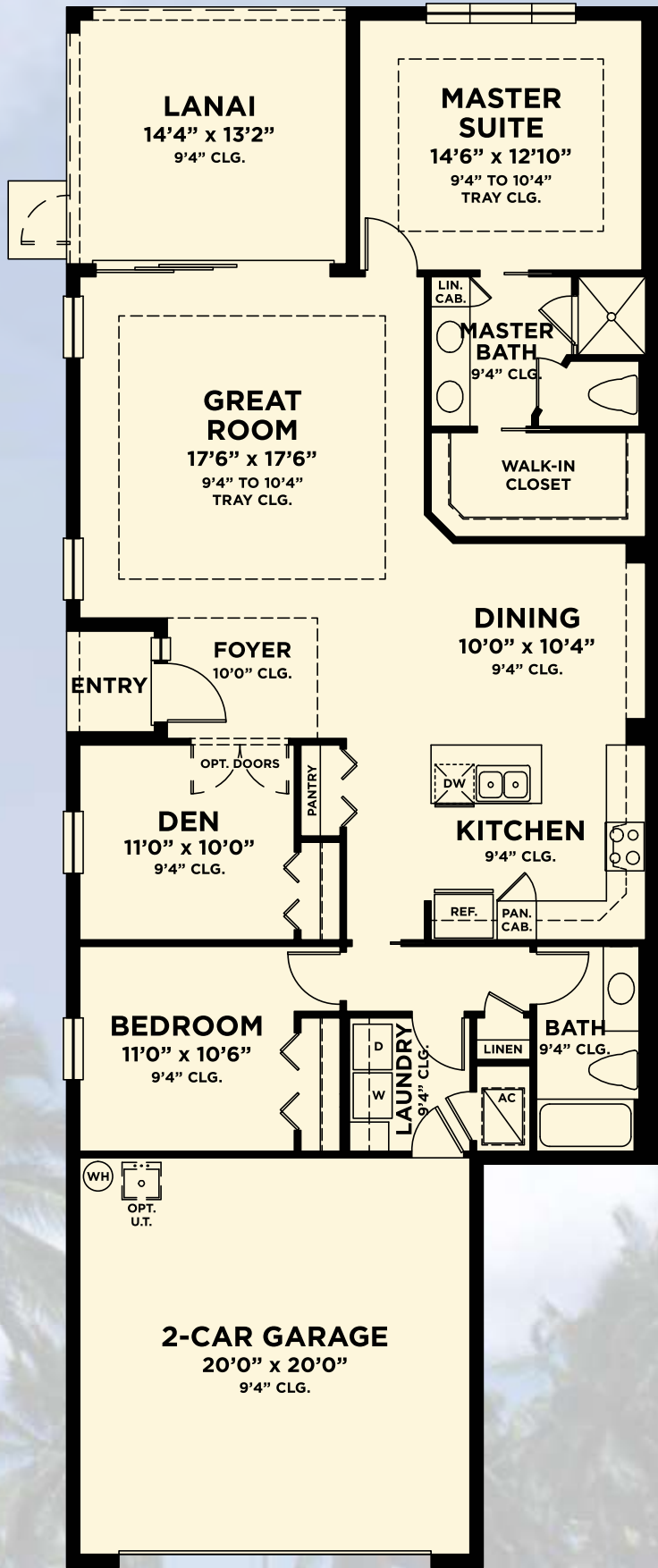


AVAILABLE DEN VARIATION

FLOOR PLAN

# Buttonwood

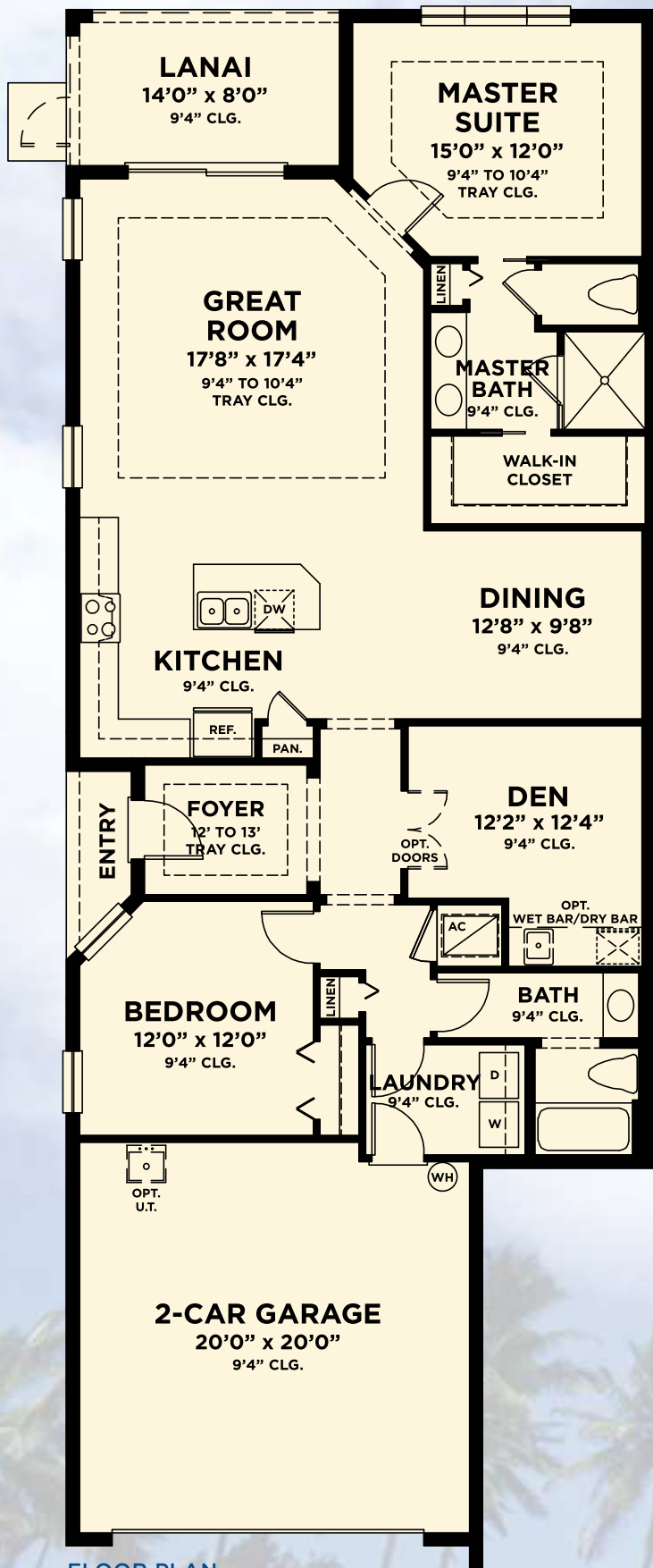
- 2 Bedrooms
- 2 Baths
- Great Room
- Den
- Covered Lanai
- 2-Car Garage




---

Total - A/C Sq. Ft.	1,565
2-Car Garage	441
Covered Entry	23
Covered Lanai	189
<hr/>	
Total Sq. Ft.	2,218

FLOOR PLAN



# Mahogany

2 Bedrooms  
2 Baths  
Great Room  
Den  
Covered Lanai  
2-Car Garage

---

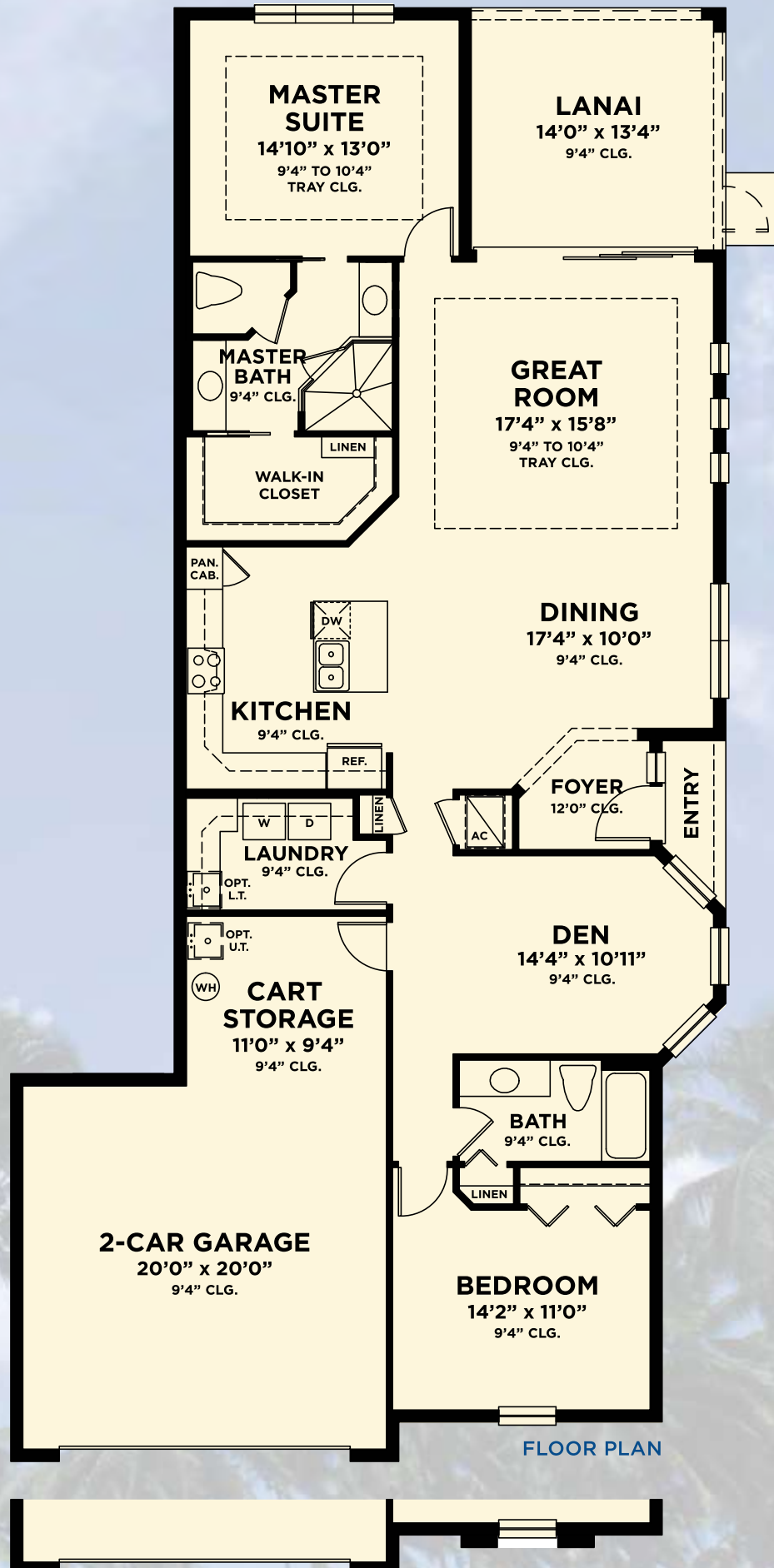
Total - A/C Sq. Ft.	1,616
2-Car Garage	428
Covered Entry	27
Covered Lanai	112
<b>Total Sq. Ft.</b>	<b>2,183</b>

FLOOR PLAN

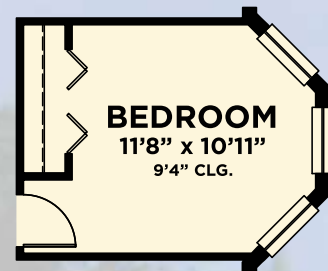
# Banyan

2 Bedrooms  
2 Baths  
Great Room  
Den  
Covered Lanai  
2-Car Garage

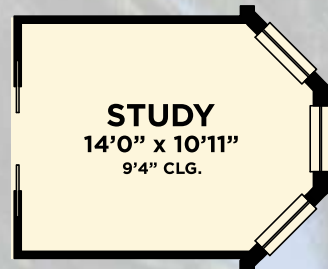
Total - A/C Sq. Ft.	1,735
2-Car Garage	530
Covered Entry	26
Covered Lanai	187
<b>Total Sq. Ft.</b>	<b>2,478</b>



FLOOR PLAN



AVAILABLE BEDROOM VARIATION



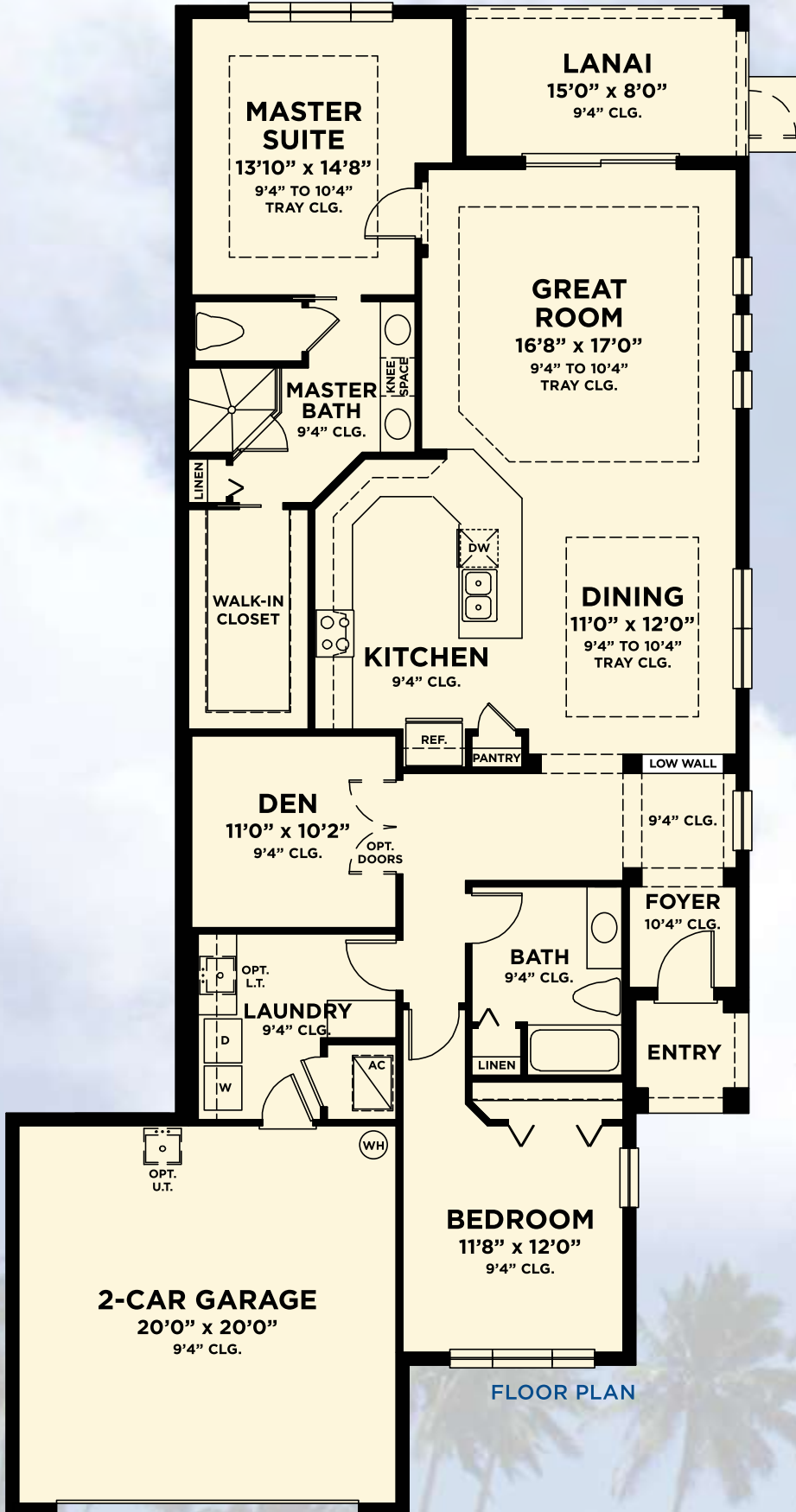
AVAILABLE STUDY VARIATION

AVAILABLE ELEVATION "B" VARIATION



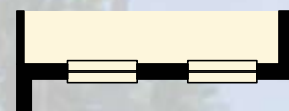
# Spruce

2 Bedrooms  
 2 Baths  
 Great Room  
 Den  
 Covered Lanai  
 2-Car Garage



Total - A/C Sq. Ft.	1,780
2-Car Garage	429
Covered Entry	36
Covered Lanai	120
<b>Total Sq. Ft.</b>	<b>2,365</b>

FLOOR PLAN



AVAILABLE ELEVATION "B" VARIATION

# Magnolia

3 Bedrooms

2 Baths

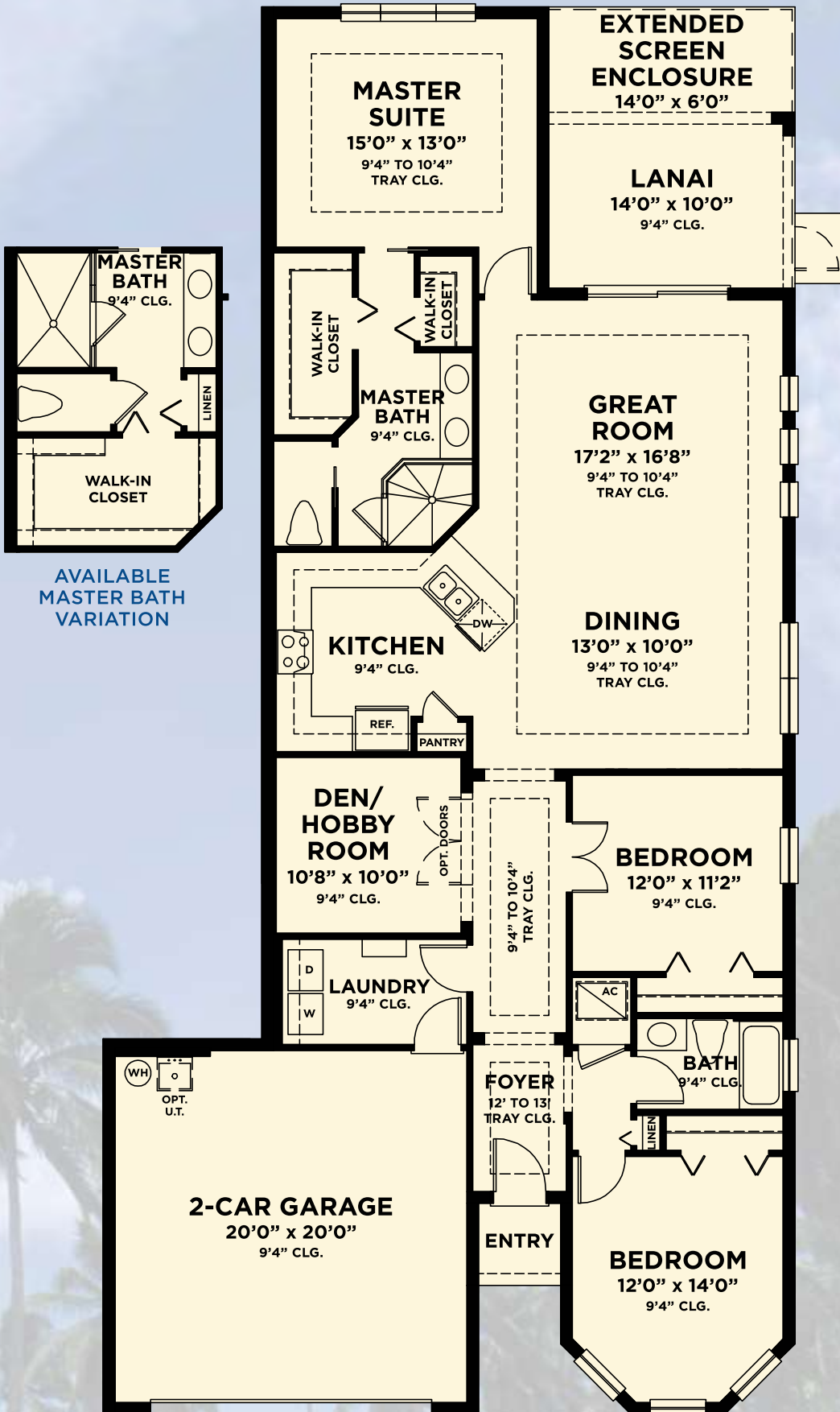
Great Room

Den/Hobby Room

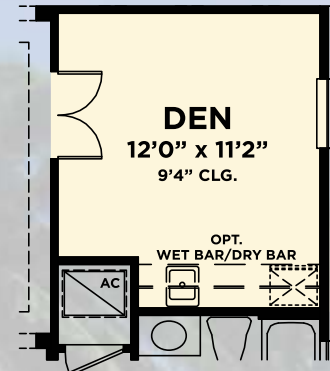
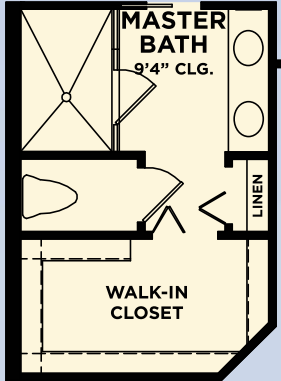
Covered Lanai

2-Car Garage

Total - A/C Sq. Ft.	1,862
2-Car Garage	432
Covered Entry	22
Covered Lanai	140
<b>Total Sq. Ft.</b>	<b>2,456</b>



AVAILABLE MASTER BATH VARIATION



AVAILABLE DEN VARIATION

FLOOR PLAN





# Verona Paired Villas



PALM/SPRUCE ELEVATION A



MAHOGANY/SPRUCE ELEVATION A



PALM/MAGNOLIA ELEVATION A



MAHOGANY/MAGNOLIA ELEVATION A



PALM/SPRUCE ELEVATION B



MAHOGANY/SPRUCE ELEVATION B

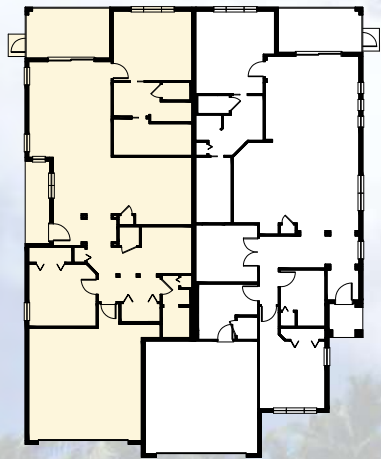


PALM/MAGNOLIA ELEVATION B

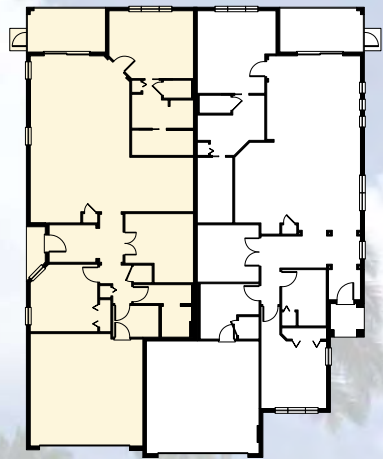


MAHOGANY/MAGNOLIA ELEVATION B

PALM SPRUCE



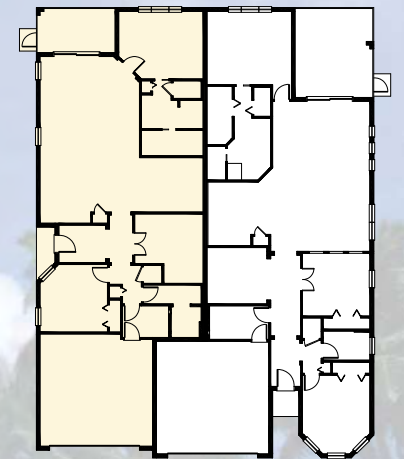
MAHOGANY SPRUCE



PALM MAGNOLIA



MAHOGANY MAGNOLIA





# Verona Paired Villas

# Verona Paired Villas



PALM/BANYAN ELEVATION A



BUTTONWOOD/SPRUCE ELEVATION A



MAHOGANY/BANYAN ELEVATION A



BUTTONWOOD/MAGNOLIA ELEVATION A



BUTTONWOOD/BANYAN ELEVATION A



PALM/BANYAN ELEVATION B



BUTTONWOOD/SPRUCE ELEVATION B



MAHOGANY/BANYAN ELEVATION B



BUTTONWOOD/MAGNOLIA ELEVATION B



BUTTONWOOD/BANYAN ELEVATION B

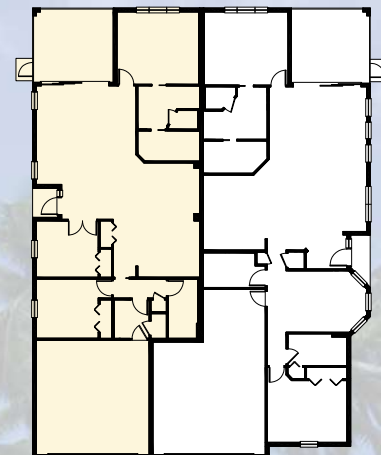
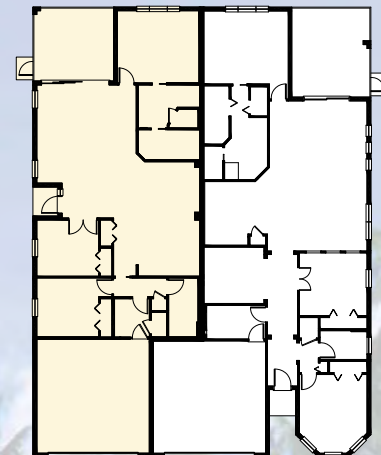
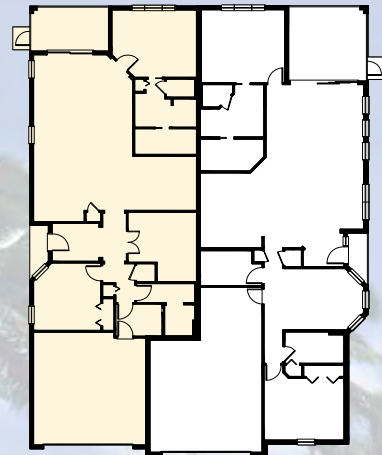
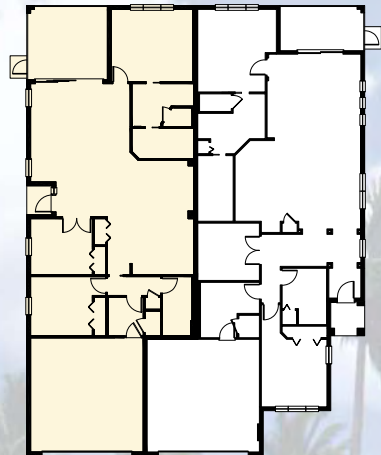
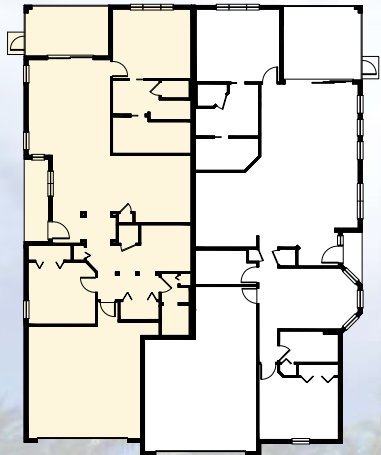
PALM BANYAN

BUTTONWOOD SPRUCE

MAHOGANY BANYAN

BUTTONWOOD MAGNOLIA

BUTTONWOOD BANYAN





FLORIDA'S NEW  
**SunCityCenter**<sup>®</sup>  
TAMPA SARASOTA  
*A 55 and Better Community*

105 Commercial Center Dr.  
Sun City Center, FL 33573  
888-442-8494

[mintofla.com](http://mintofla.com)



# RENAISSANCE

---

## VERONA



included premium features



## included premium features

## included premium features

### VERONA PAIRED VILLAS

#### ENERGY EFFICIENT HOMES - SAVING YOU MORE MONEY PER MONTH ON YOUR UTILITY BILLS

- Fresh air intake and insulated sealed duct air conditioning system for improved indoor air quality
- Low volatile organic compound (VOC) **Sherwin-Williams**® paints and **Mohawk**® carpet to improve well-being
- Exterior ventilation of microwave hood
- In-wall **Taexx**® pest defense system eliminates personal contact with active ingredients
- Energy efficient double-paned low-emissivity (*Low-E*) windows, sliders and glass doors
- **GE** Energy Star® appliance package
- High efficiency 14-SEER **Carrier**® central air conditioning and heating
- Insulated fiberglass front entry door
- Energy-saving compact fluorescent light bulbs
- Energy Star® bathroom exhaust fans
- R-30 insulated ceiling and R-4,1 on block walls
- Energy efficient quick-recovery water heater
- Irrigation system with rain sensor
- **Moen**® water-saving plumbing fixtures
- Water-saving, comfort height elongated water closets

#### FOR INCREASED SAFETY AND SECURITY

- Security system with contacts on all operable windows and doors (*Excluding overhead garage doors*), includes 1 year of monitoring
- Wireless hand-held emergency button and exterior strobe for increased protection
- Decorative **Schlage**® handle-set, entry dead bolt lock and door viewer
- Private 2-car garage with automatic openers and transmitters
- Smoke and carbon monoxide detectors throughout
- Tempered sliding glass doors and bathroom windows for your safety
- Direct mounted 24 gauge galvanized steel panel storm shutters
- Impact side light at front entry (*Per plan*)
- 2 alarm keypads, one located at the garage entry and a portable dashboard for added convenience

#### FOR IMPROVED INDOOR COMFORT AND LIVABILITY

- **Schlage**® lever hardware on all interior doors for ease of opening
- Raised height vanities in all master and secondary bathrooms
- **Moen**® lever faucets for ease of use
- **Honeywell**® 7-day programmable thermostat with a digital display for enhanced viewing
- MERV 8 air conditioning filtration system
- Rocker-style electrical switches for ease of operation

#### FOR ENHANCED DESIGN

- 9'4" to 13' ceiling heights per plan with architecturally enhanced tray ceilings
- 5 1/4" sculpted colonial wood baseboards and 2 1/4" colonial wood casings
- Screened lanais on all plans
- 6'-8" entry door with impact sidelight (*Per plan*)
- Over-sized walk-in closets in master bedrooms
- His and hers under mount sinks in master bathroom raised height vanities
- Professionally designed lush landscape package with fully sodded lot

#### FOR GREATER CONVENIENCE

- 10-year structural warranty
- 2-year **GE** appliance warranty
- 10-year limited warranty on the air conditioning and heating system parts
- **Sentricon**® termite elimination system
- 2-year material & workmanship warranty

#### FOR HIGHER QUALITY CONSTRUCTION

- Design & construction in accordance with rigorous wind resistive requirements of Florida Building Code
- Steel reinforced monolithic concrete foundation system with reinforced concrete block exterior walls included premium features
- Reinforced concrete block party walls for improved strength and fire protection

- Designer selected paver driveways, walkways, entries & covered lanais
- **Mapeguard**™ 2 crack suppressant membrane installed under all tile areas for improved warranty and protection
- **Sherwin-Williams**® acrylic finish on garage floors
- Professionally engineered roof truss system
- **Sherwin-Williams**®, **Loxon**® 2-coat exterior paint system for long lasting color retention and climate protection
- **Certainteed**® 30-year dimensional roof shingles with embedded mildew resistant properties
- PEX piping plumbing system for superior performance
- **DensShield**® tile backer at all tub and shower areas for added protection

#### EXCEPTIONAL INTERIOR FINISHES

##### Kitchen

- Granite counter tops with 4" backsplash
- Designer selected recessed panel wood cabinets with 36" uppers and an accented raised cabinet bump-out above cook top
- Double compartment under-mount (50/50 or 70/30) stainless steel sink
- **Moen**® faucet with integrated pull-out sprayer
- 1/2 hp **Badger**® garbage disposal
- **GE** Energy Star® side-by-side refrigerator with in-door ice and water
- **GE** Energy Star® sound insulated automatic dishwasher
- **GE** free-standing, smooth top, self-cleaning electric range
- **GE** microwave hood with exterior ventilation
- Recessed lighting with energy-saving compact fluorescent light bulbs

##### Master Bathroom

- Granite counter tops with 4" backsplash
- Raised height recessed panel cabinet vanities with his and hers under-mount bathroom sinks

- Full width mirror over vanity with decorator selected **Progress Lighting**® wall light above
- Recessed lighting with energy-saving compact fluorescent light bulbs
- Vapor proof recessed light with energy-saving compact fluorescent light bulb in shower
- Decorative medicine cabinets
- **Mohawk**® ceramic tile floors, 8"x12" ceramic tile on shower walls and 6"x6" ceramic tile on shower floors
- **Moen**® fixtures with lever handles for ease of use
- Energy Star® bathroom exhaust fans on separate switch
- Towel and bath accessories
- Water-saving, comfort-height elongated water closets
- Tiled & recessed soap niche in shower

##### Secondary and Powder Bathrooms

- Granite counter tops with 4" backsplash
- Raised height recessed panel cabinet vanities with under-mount sinks (*All secondary bathrooms*)
- Full width mirror over vanity with decorator selected **Progress Lighting**® wall light above
- Recessed lighting with energy-saving compact fluorescent light bulbs
- Vapor proof recessed light with energy-saving compact fluorescent light bulb over tub/shower
- Decorative medicine cabinets (*Per plan*)
- **Mohawk**® ceramic tile floors, 8"x12" ceramic tile on tub/shower walls
- **Sterling**® bathtubs in all secondary bathrooms
- **Moen**® fixtures with lever handles for ease of use
- Energy Star® bathroom exhaust fans on separate switch
- Towel and bath accessories
- Water-saving, comfort-height elongated water closets
- Tiled & recessed soap niche in all secondary bathrooms



# included premium features

## Laundry

- Granite counter tops with 4" backsplash (*Per plan*)
- Designer selected recessed panel wood cabinets (*Per plan*)
- **GE** Energy Star® washer and **GE** large capacity dryer
- One row of ventilated wire shelving

## WITHIN YOUR HOME

- 18" **Mohawk**® ceramic tile in foyer, kitchen, great room, dining, a/c closet, café, powder and laundry room
- **Luxurious Mohawk**® stain-resistant, low VOC carpeting with high performance carpet cushion in all bedrooms and den
- Knockdown textured finish on ceilings and light orange peel finish on interior walls
- High speed structured wiring network – CAT-5E data lines/connectors and RG-6 quad shield coaxial cable
- Telephone pre-wire in kitchen, great room, den and all bedrooms
- Cable television pre-wire in great room, den and all bedrooms
- Ceiling fan pre-wire in great room, den, covered lanai, and all bedrooms
- 50-gallon energy efficient quick-recover water heater
- Recessed lighting with energy-saving compact fluorescent light bulbs in entry, foyer (*Per plan*), kitchen, covered lanai, and all bathrooms

- Decorative **Progress Lighting**® fixtures in all bathrooms, dining room, foyer (*Per plan*) and café
- Electric entry door chime
- White solid-surface window sills
- Vinyl clad steel ventilated closet shelving
- Air conditioned bathrooms and walk-in closets

## OUTSIDE OF YOUR HOME

- Professionally designed lush landscape package with fully sodded lot
- Irrigation system with rain sensor
- **Sentricon**® termite elimination system with 1-year monitoring
- **Progress Lighting**® coach lights
- Hose bibs at front and rear for your convenience
- Gutters at front entry (*Per plan*)
- Paver driveways, walkways, entries & covered lanais

## MINTO ONLY USES QUALITY BRANDS



Buy it for looks. Buy it for life.®



GE imagination at work



**SHERWIN WILLIAMS**®



FLORIDA'S NEW

**SunCityCenter**®

TAMPA SARASOTA

A 55 and Better Community

© Minto Communities, LLC 2015. All rights reserved. Content may not be reproduced, copied, altered, distributed, stored or transferred in any form or by any means without express written permission. Artist's renderings, dimensions, specifications, prices and features are approximate and subject to change without notice. ORAL REPRESENTATIONS CANNOT BE RELIED UPON AS CORRECTLY STATING REPRESENTATIONS OF THE DEVELOPER. FOR CORRECT REPRESENTATIONS, MAKE REFERENCE TO THIS BROCHURE AND TO THE DOCUMENTS REQUIRED BY SECTION 718.503, FLORIDA STATUTES, TO BE FURNISHED BY A DEVELOPER TO A BUYER OR LESSEE. Minto, the Minto logo, Sun City Center and the Sun City Center logo are trademarks of Minto Communities, LLC, and/or its affiliates. CGC1519880, 8/15

